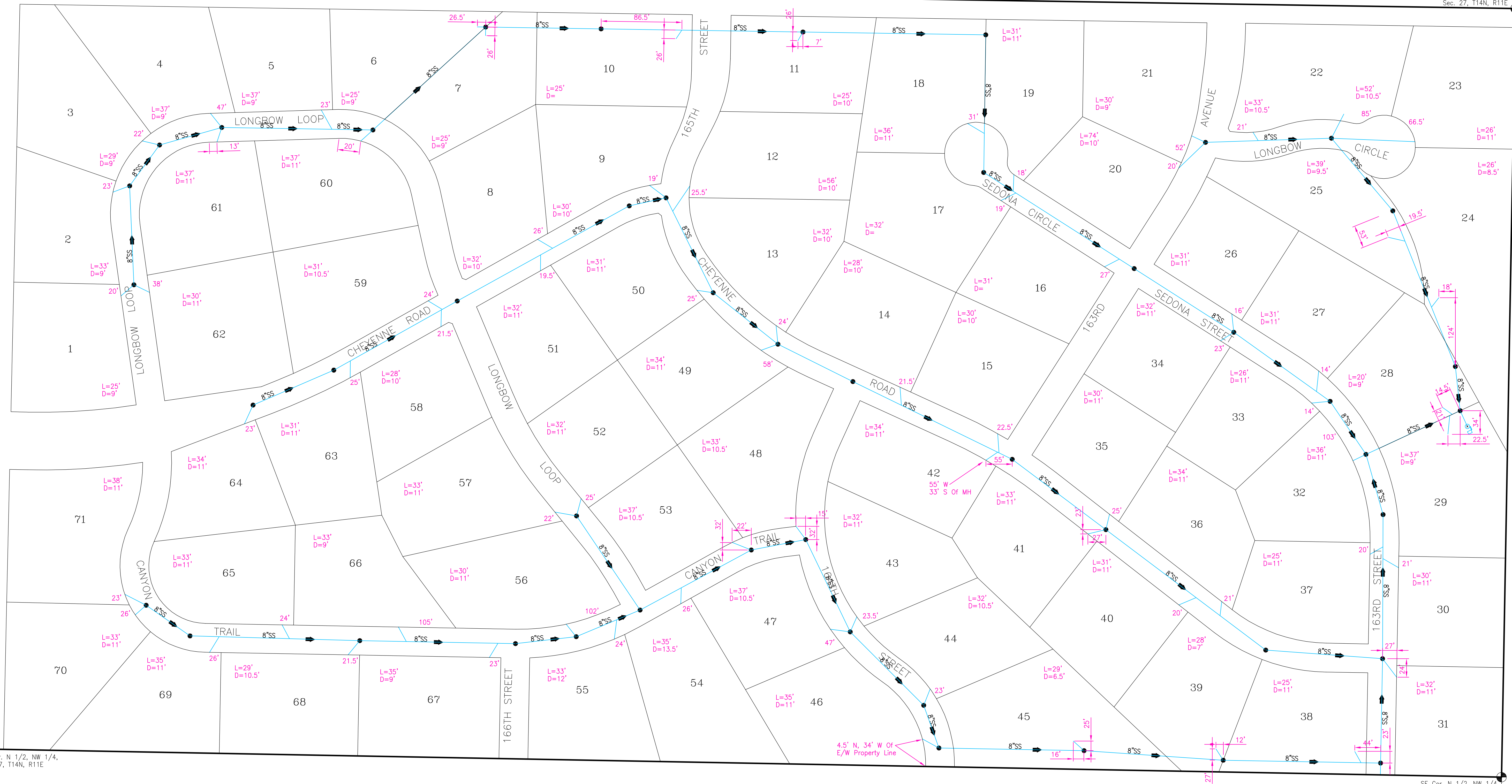


CHEYENNE COUNTY ESTATES

NW Cor. NW 1/4,
Sec. 27, T14N, R11E

NE Cor. NW 1/4,
Sec. 27, T14N, R11E

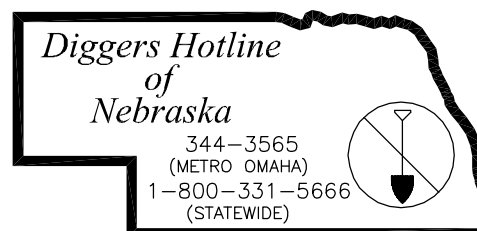


SW Cor. N 1/2, NW 1/4,
Sec. 27, T14N, R11E

SE Cor. N 1/2, NW 1/4,
Sec. 27, T14N, R11E

These Record Drawings have been prepared based on information submitted, in part, by others. While this information is believed to be reliable, the Engineer is not responsible for its accuracy, nor for errors or omissions which may have been incorporated into this document as a result.

Retain the Location Request Number for YOUR Own Protection!



METROPOLITAN UTILITIES DIST.
OMAHA PUBLIC POWER DIST.
CITY OF OMAHA
U.S.-WEST
CABLEVISION
COX CABLE OF OMAHA
PEOPLES NATURAL GAS
NORTHERN NATURAL GAS
UNITED CABLE TELEVISION

NOTE:
UNDERGROUND UTILITY LOCATIONS SHOWN ARE FROM INFORMATION PROVIDED TO US FROM UTILITY COMPANIES. UTILITY COMPANIES MAKE NO WARRANTIES OR GUARANTEES REGARDING THE ACCURACY OF THE INFORMATION CONTAINED IN THEIR DOCUMENTS AND PROVIDES IT ONLY AS GENERAL INFORMATION TO THE RECEIVER. FOR SPECIFIC LOCATIONS DURING CONSTRUCTION CALL "DIGGERS HOTLINE" 402 344-3565 (METRO OMAHA) 1-800-331-5666 (STATEWIDE) PRIOR TO DIGGING.

lamp, ryneerson & associates, inc.
engineers surveyors planners

14710 west dodge road, suite 100
omaha, nebraska 68154 2029

ph 402 496 2498
fax 402 496 2730