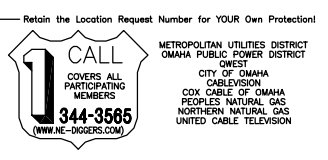
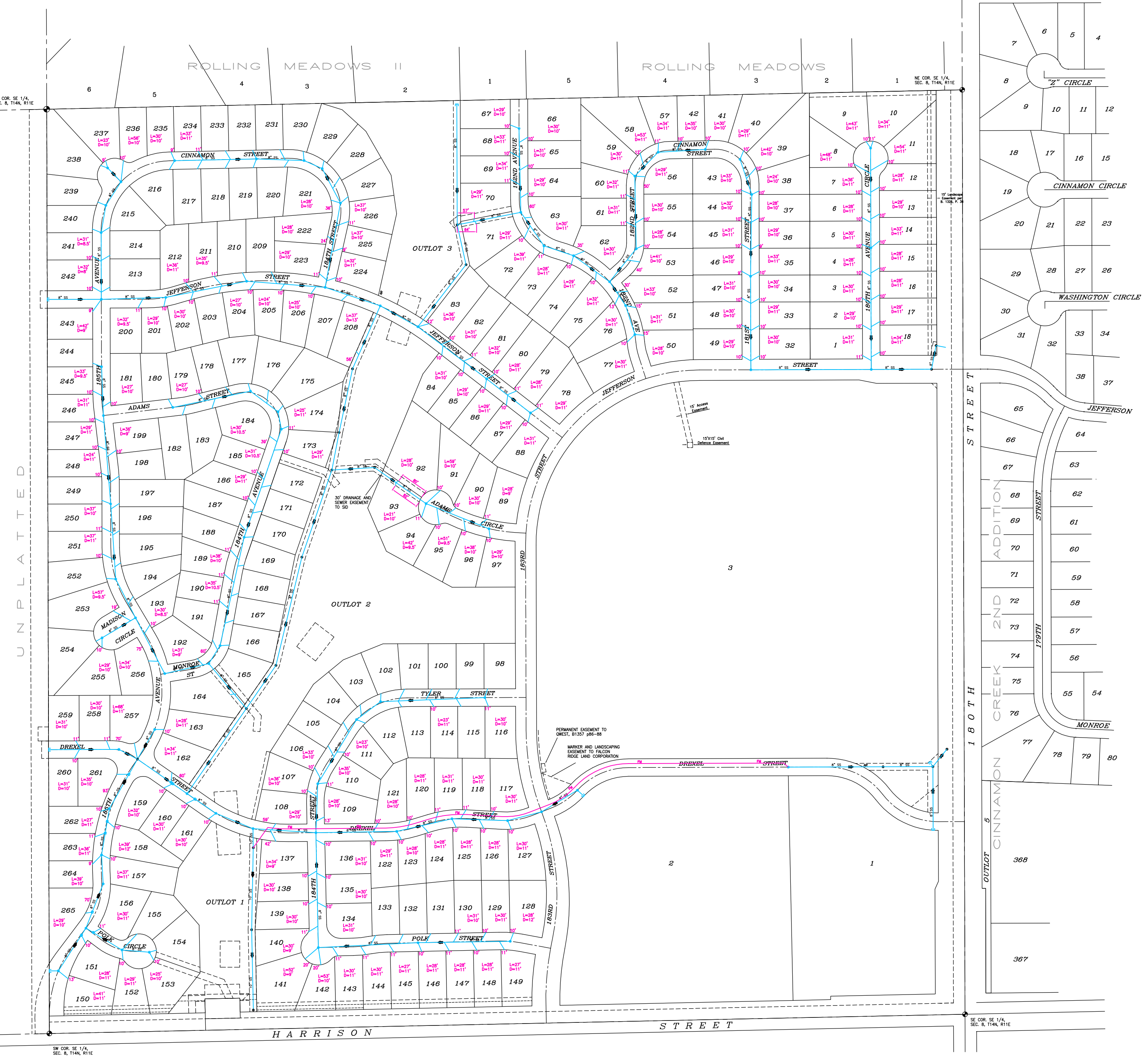


These Record Drawings have been prepared based on information submitted in part, by others. While this information is believed to be reliable, the Engineer is not responsible for its accuracy, nor for errors or omissions which may have been incorporated into this document as a result.



lamp, ryneason & associates, inc.
 engineers surveyors planners
 14710 West Dodge Road, Suite 100
 Omaha, Nebraska 68154-2029
 PH 402 496 3488
 FAX 402 496 2790